

Microsoft Dynamics 365 and Power Platform Community Conference

MAY 26 – 28, 2025
Portorož, Slovenia, Europe



FINANCE &
OPERATIONS



BUSINESS
CENTRAL



CUSTOMER
ENGAGEMENT



POWER
PLATFORM



5th
TRACK



PARTNER
BizTRACK



Microsoft Dynamics 365 and Power Platform Community Conference

MAY 26 – 28, 2025
Portorož, Slovenia, Europe

CAPACITY-BASED LICENSING for DYNAMICS 365 F&O





Microsoft Dynamics 365 and Power Platform Community Conference

MAY 26 – 28, 2025
Portorož, Slovenia, Europe



André Arnaud de Calavon
Managing Partner / CTO, Next365
next 365

Laze Janev
Solution Architect, Janev Consulting



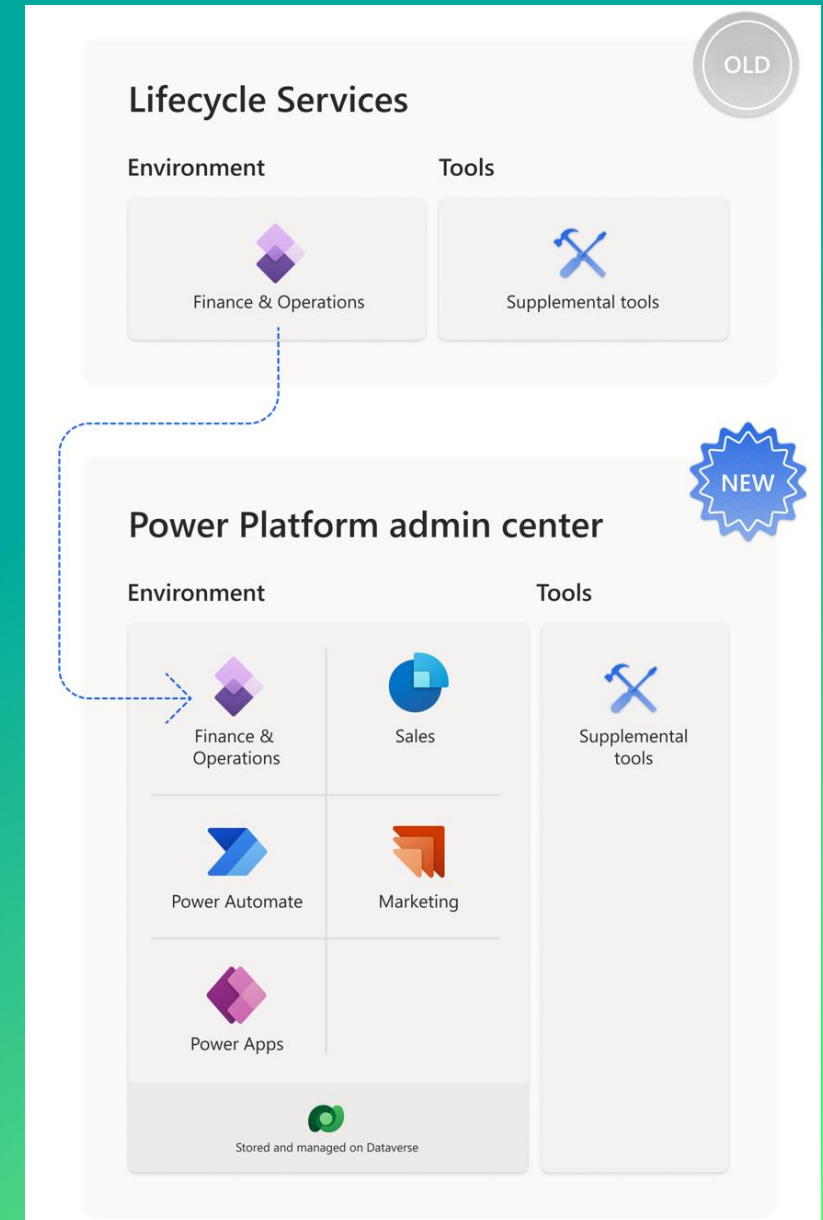
SESSION OBJECTIVES

- Environment management **PPAC**
- Understand **licensing** concepts
- Raise awareness about entitled **database capacity**
- Different types of **cost saving** by cleaning, archiving and more



From LCS to PPAC

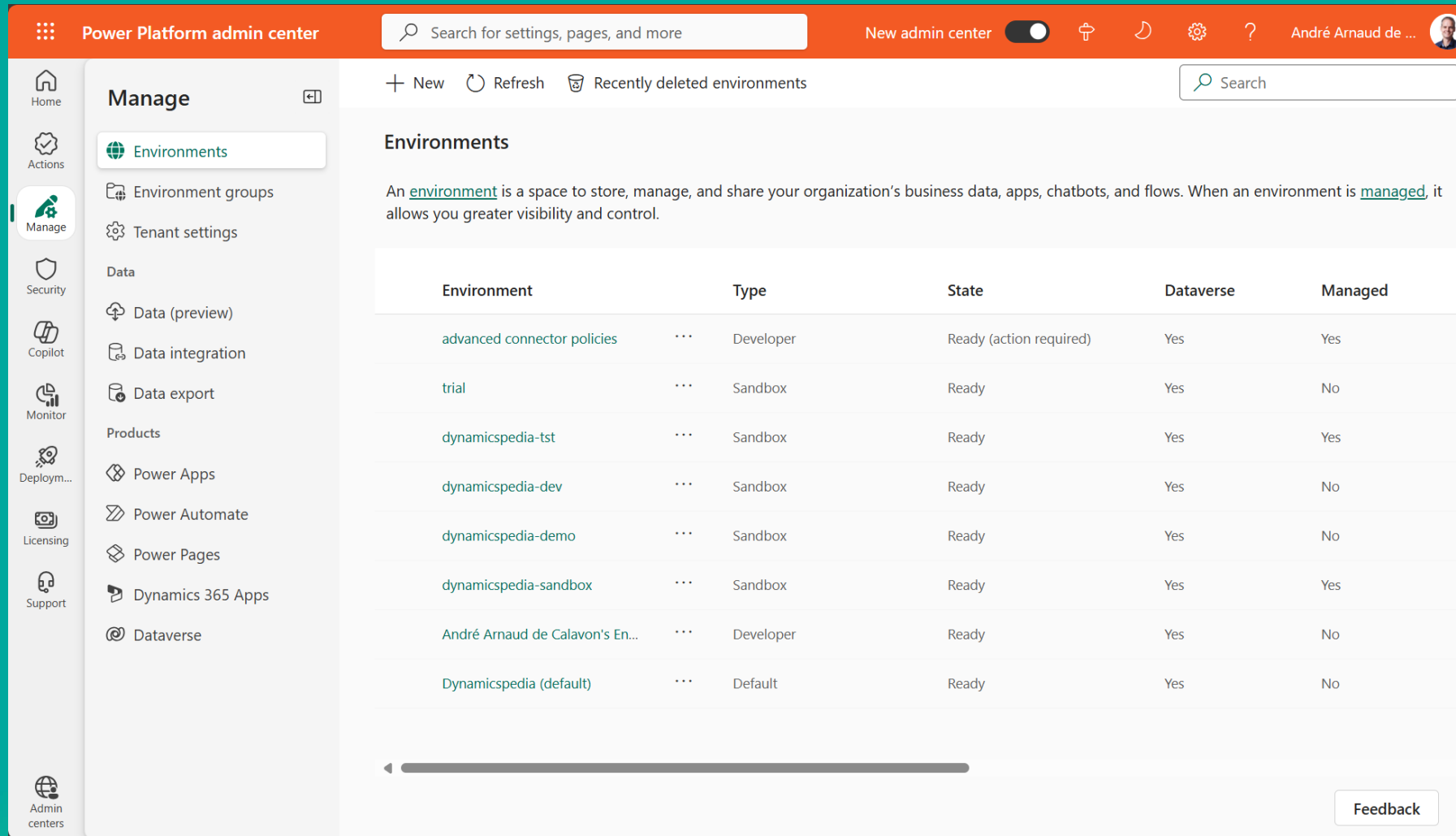
- Single admin portal
 - F&O as an app next to other D365 apps
 - Low code and business applications
- Unified environment and application lifecycle
 - Environment creation
 - Version updates
 - Copy, backup, restore
 - Administration mode
- UX and Powershell



DYNAMICS MINDS



... to Power Platform Admin Center



The screenshot displays the Power Platform Admin Center interface. The top navigation bar is orange and includes the 'Power Platform admin center' title, a search bar, and user information for 'André Arnaud de ...'. The left sidebar is grey and lists various management categories: Home, Actions, Manage (highlighted), Security, Copilot, Monitor, Deploy..., Licensing, and Support. The 'Manage' section is expanded, showing sub-options like Environments, Environment groups, Tenant settings, Data, Data (preview), Data integration, Data export, Products, Power Apps, Power Automate, Power Pages, Dynamics 365 Apps, and Dataverse. The main content area is titled 'Environments' and includes a description: 'An [environment](#) is a space to store, manage, and share your organization's business data, apps, chatbots, and flows. When an environment is [managed](#), it allows you greater visibility and control.' Below this is a table listing various environments.

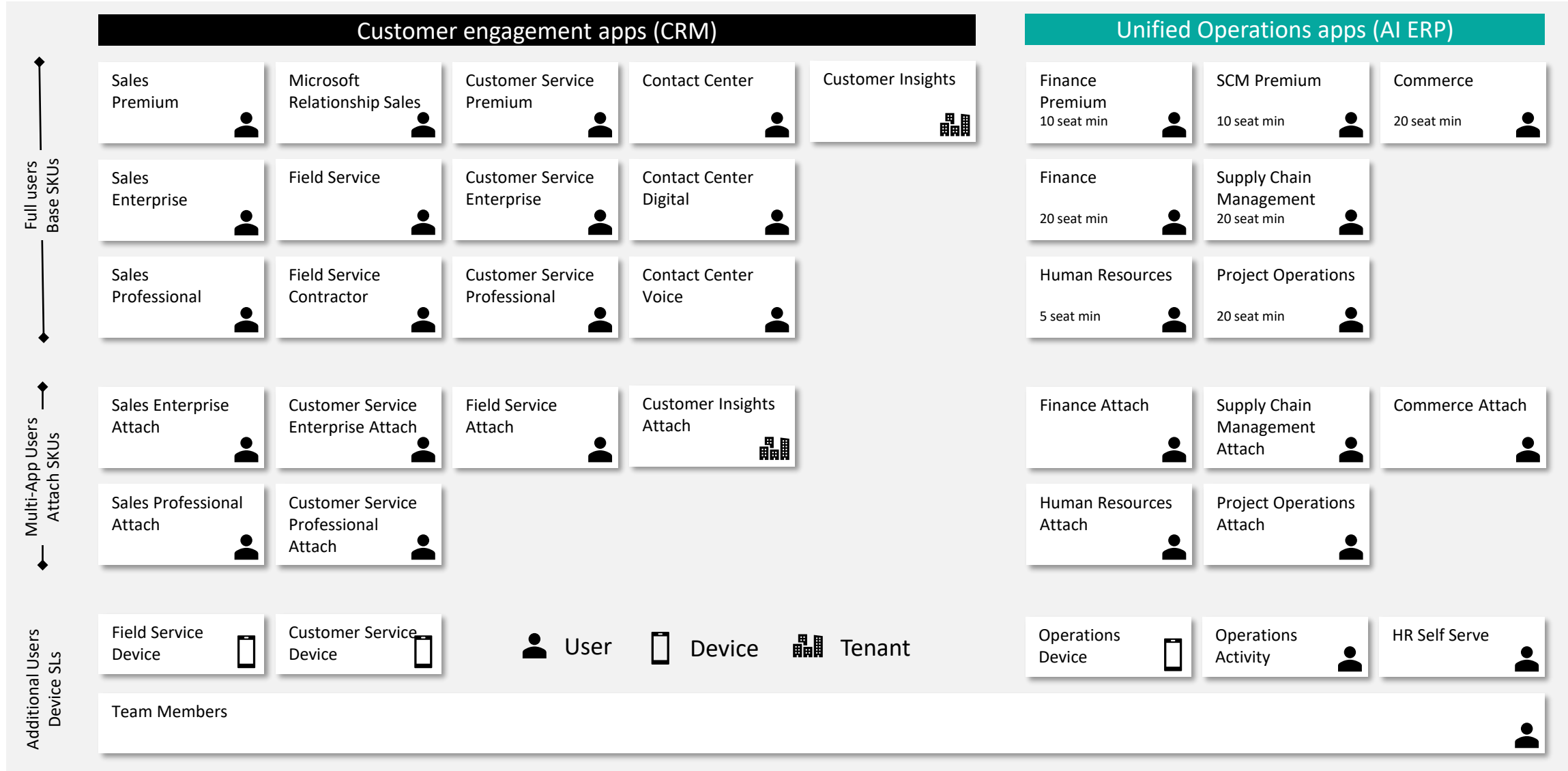
Environment	Type	State	Dataverse	Managed
advanced connector policies	Developer	Ready (action required)	Yes	Yes
trial	Sandbox	Ready	Yes	No
dynamicspedia-tst	Sandbox	Ready	Yes	Yes
dynamicspedia-dev	Sandbox	Ready	Yes	No
dynamicspedia-demo	Sandbox	Ready	Yes	No
dynamicspedia-sandbox	Sandbox	Ready	Yes	Yes
André Arnaud de Calavon's En...	Developer	Ready	Yes	No
Dynamicspedia (default)	Default	Ready	Yes	No



Environment creation/managements LCS vs PPAC

	LCS	PPAC
Included environments	1 Production & 1 T2 Sandbox	Unlimited environments
Adding extra environment	Sandbox Add-on SKU	<ul style="list-style-type: none">• Capacity based (minimum 1GB)• Pay as you go Subscription• Trial environment
Development environments	Cloud hosted environments (Using Azure subscriptions)	
Compute tier	Production and Sandboxes run on different compute tiers Dev runs on different architecture	Production and Sandboxes run on same compute tiers (maybe dev also?!?)

Dynamics 365 licensing



Capacity entitlements

USD			Base	Premium	Activity	Team member	Device
Price		PU/PM	210 USD	300 USD	50 USD	8 USD	85 USD
Per Tenant	Dataverse	Database	10 GB	15 GB	-	-	-
		File	20 GB	30 GB	-	-	-
		Log	2 GB	3 GB	-	-	-
	Operations	Database	60 GB	90 GB	-	-	-
		File	40 GB	60 GB	-	-	-
Per Subscription License	Dataverse	Database	250 MB	500 MB	64 MB	-	102 MB
		File	2 GB	3 GB	512 MB	-	819 MB
	Operations	Database	4 GB	6 GB	375 MB	-	600 MB
		File	4 GB	6 GB	1 GB	-	1,6 GB



License and capacity calculator

next 365

License details	Base	Premium	Attach	Capacity entitlement	Operations		Dataverse		
					Database	File	Database	File	Log
Dynamics 365				Tenant	60,0		40,0	10,0	20,0
Finance	50	0	0						2,0
Supply Chain Management	20	0	0	Base users	280,0		300,0	18,8	150,0
Commerce	0	-	0						-
Project Operations		-	12	Operations - Activity	5,5		15,0	0,9	7,5
Human Resources	5	-	0	Operations - Device	5,9		16,0	1,0	8,0
Other users	Quantity			Capacity add-on	0,0		0,0	0,0	0,0
Operations - Activity	15			Sandbox add-on	39,4				-
Team members	180								
HR Self service	0								
Operations - device	10								
				Total GB	390,7		371,0	30,7	185,5
Sandbox add-on (Tier 2)	2								2,0
Sandbox add-on (Tier 3)	0								
Sandbox add-on (Tier 4)	1			License per month	21.475	USD			
Sandbox add-on (Tier 5)	0			License per year	257.700	USD			
Dataverse - database add-on	0			Base users	75				
Dataverse - file storage add-on	0			Premium users	0				
Operations - database add-on	0			Attach users	12				
Operations - file storage add-on	0			Sandbox add-ons	3				

Disclaimer

Sheet created based on current understanding of the Dynamics 365 Licensing guide
Sandbox prices might be incorrect as they are calculated from EUR to USD



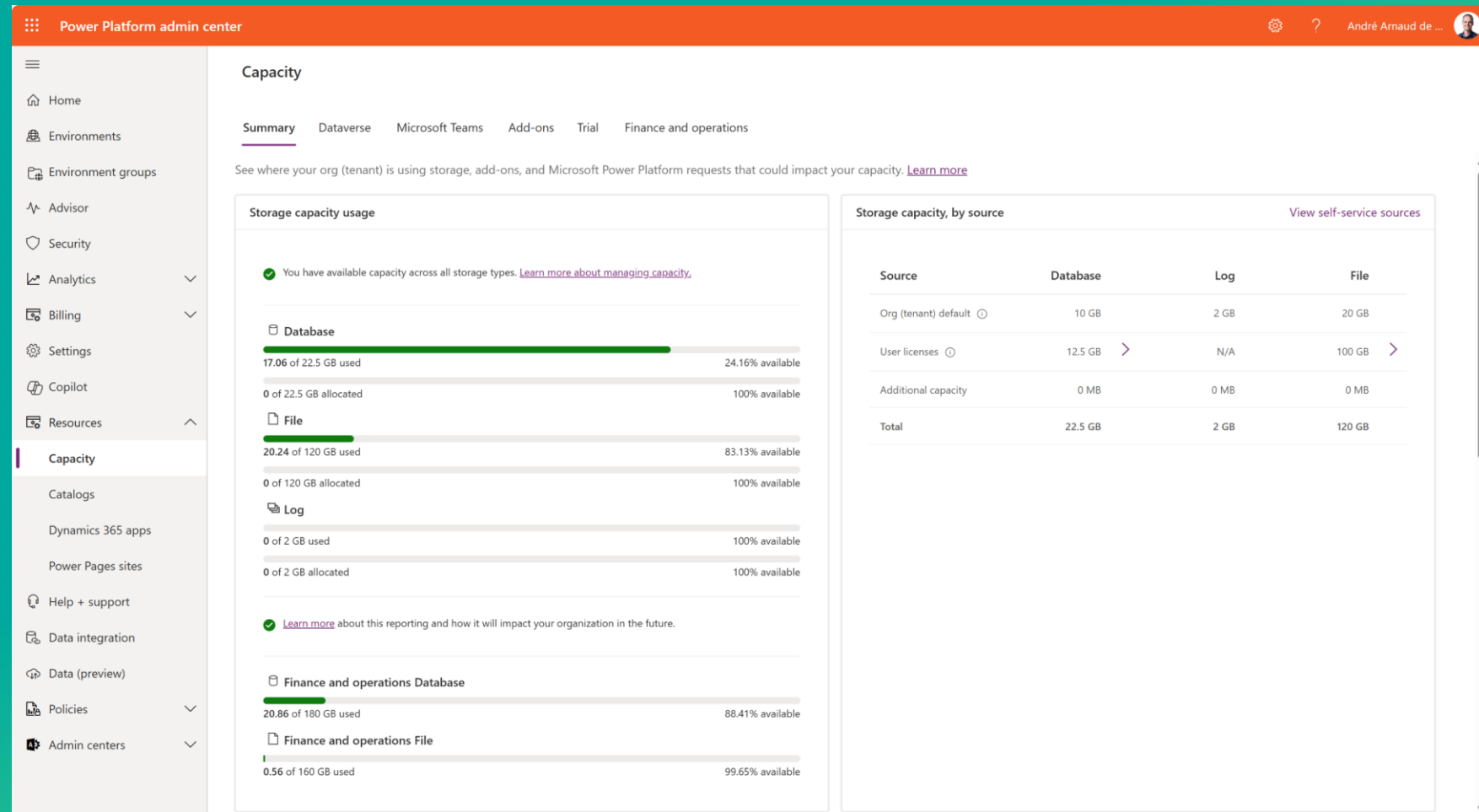
Capacity usage type reporting in PPAC

Dataverse capacity:

- Database
- File
- Log

F&O capacity:

- Database
- File



PPAC FO Usage reporting per environment

Power Platform admin center

Home

Environments

Environment groups

Advisor

Security

Analytics

Billing

Settings

Copilot

Resources

Capacity

Catalogs

Dynamics 365 apps

Power Pages sites

Capacity

SummaryDataverseMicrosoft TeamsAdd-onsTrialFinance and operations

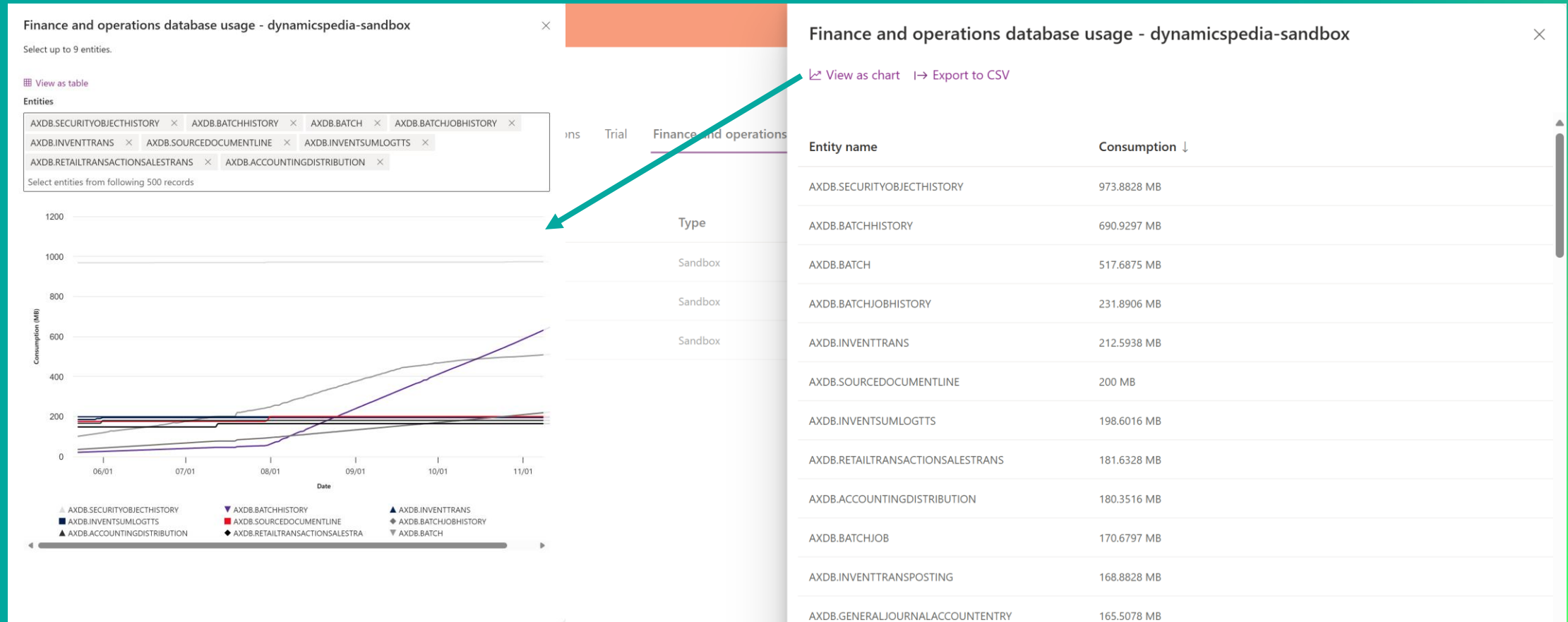
I→ Export to CSV

Search

Environment	Type	Finance and operations database usage	Finance and operations file usage	Last updated
dynamicspedia-summit	Sandbox	6.28 GB	43.22 MB	11/18/2024 8:29:56 PM
dynamicspedia-demo	Sandbox	6.9 GB	335.25 MB	11/18/2024 9:40:08 PM
dynamicspedia-sandbox	Sandbox	7.68 GB	191.75 MB	11/18/2024 7:50:17 PM

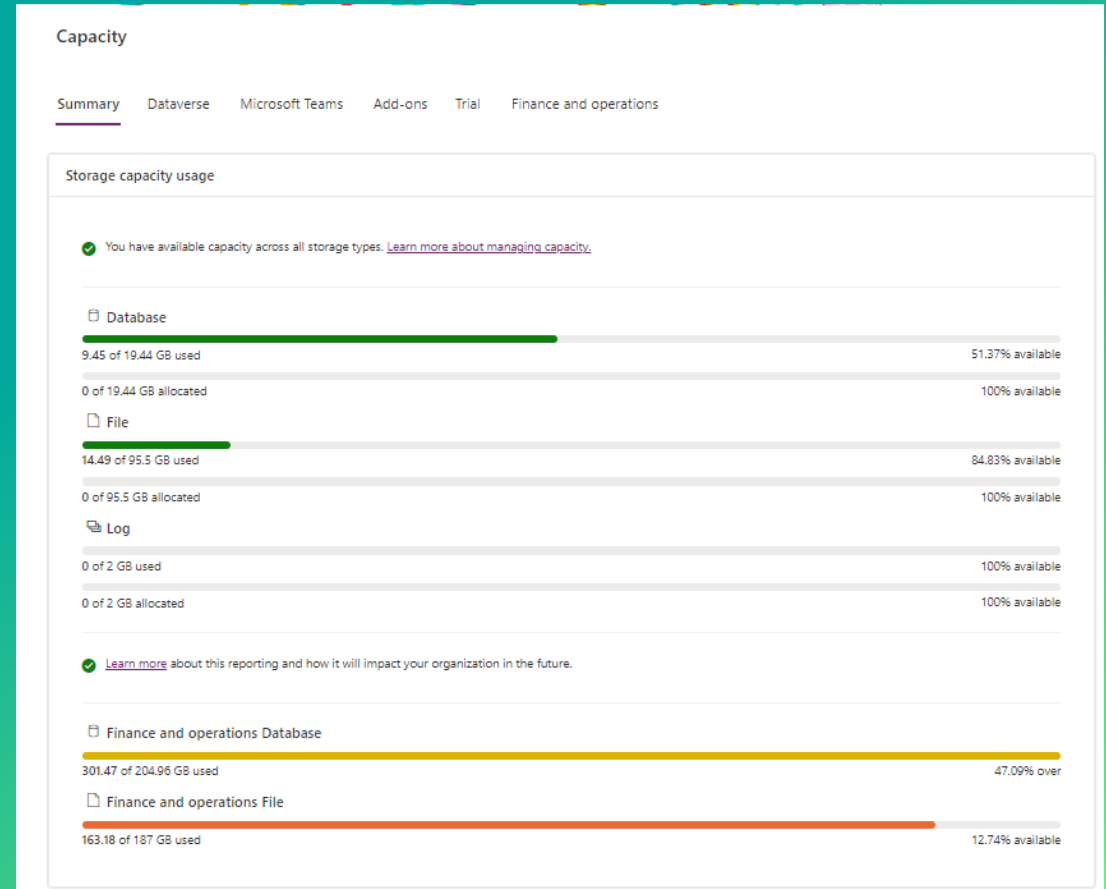


PPAC F0 Usage reporting per environment per table



From theory to reality – Wake up call!

- Client databases too large
- Sandbox add-on SKU deprecated
- Database and file capacity SKUs



Overrun restrictions

LCS to PPAC migration

Same restrictions for Dataverse and F&O environments

PPAC Administrative restrictions

- Create environment
- Copy environment
- Restore environment
- Convert trial
- Add Dataverse database

Documentation



Capacity optimization plan

Reduce database and file storage:

- Identify largest tables
- Enable specific features
- Enable clean-up jobs
- Archive data
- Review customizations
- Other data and settings

Entity name	Consumption ↓
AXDB.LEDGERJOURNALTRANS	214490.3 MB
AXDB.BATCHHISTORY	150508.2 MB
AXDB.GENERALJOURNALACCOUNTENTRY	140807.5 MB
AXDB.CREDITCARDAUTHTRANS	131288.4 MB
AXDB.RETAILTRANSACTIONPAYMENTTRANS	128101.4 MB
MRDB.Fact	76108.46 MB
AXDB.GENERALJOURNALENTTRY	73540.85 MB
AXDB.ASSETTRANS	43148.7 MB
AXDB.SUBLEDGERVOUCHERGENERALJOURNALENTTRY	40239.54 MB
AXDB.LEDGERJOURNALTRANS_ASSET	33539.64 MB
AXDB.INVENTTRANS	32180.63 MB
AXDB.RETAILTRANSACTIONSALESTRANS	31229.9 MB
AXDB.SALESLINE	23728.33 MB
AXDB.RETAILTRANSACTIONTABLE	20792.59 MB
AXDB.DIMENSIONATTRIBUTEVALUECOMBINATION	20638.58 MB
AXDB.CUSTINVOICETRANS	17966.23 MB

Feature recommendations

- “Performance enhancement for general ledger dimension set balance calculation”
 - Introduced in 10.0.40
 - Next to performance also less database consumption
 - Review impact on ISVs, customizations, and reporting
- Features containing word “Cleanup”
- Features containing word “Performance”
- “Archive with Dataverse long term retention”

Cleanup

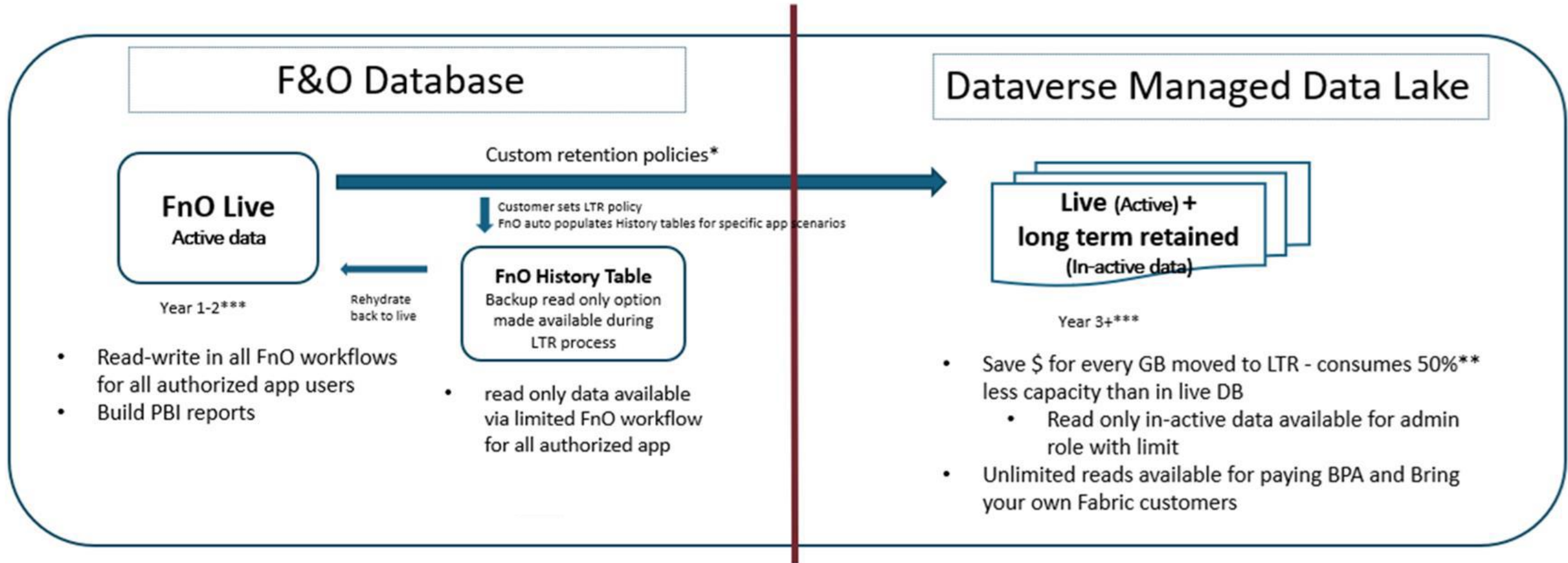
- Default cleanup by application
 - SysDatabaseLog reminder to setup cleanup job (10.0.32)
 - Data management job history older than 90 days (10.0.36)
 - EventCUD auto cleanup of obsolete records (10.0.40)
 - InventReportDimHistory records older than 90 days (10.0.40)
 - Warehouse inventory transactions
- Review and setup cleanup jobs from multiple modules
 - Some jobs are global some per legal entity
- ISV solutions
 - Some have cleanup jobs some not



Archive data



Archive framework



Max cost

Least cost

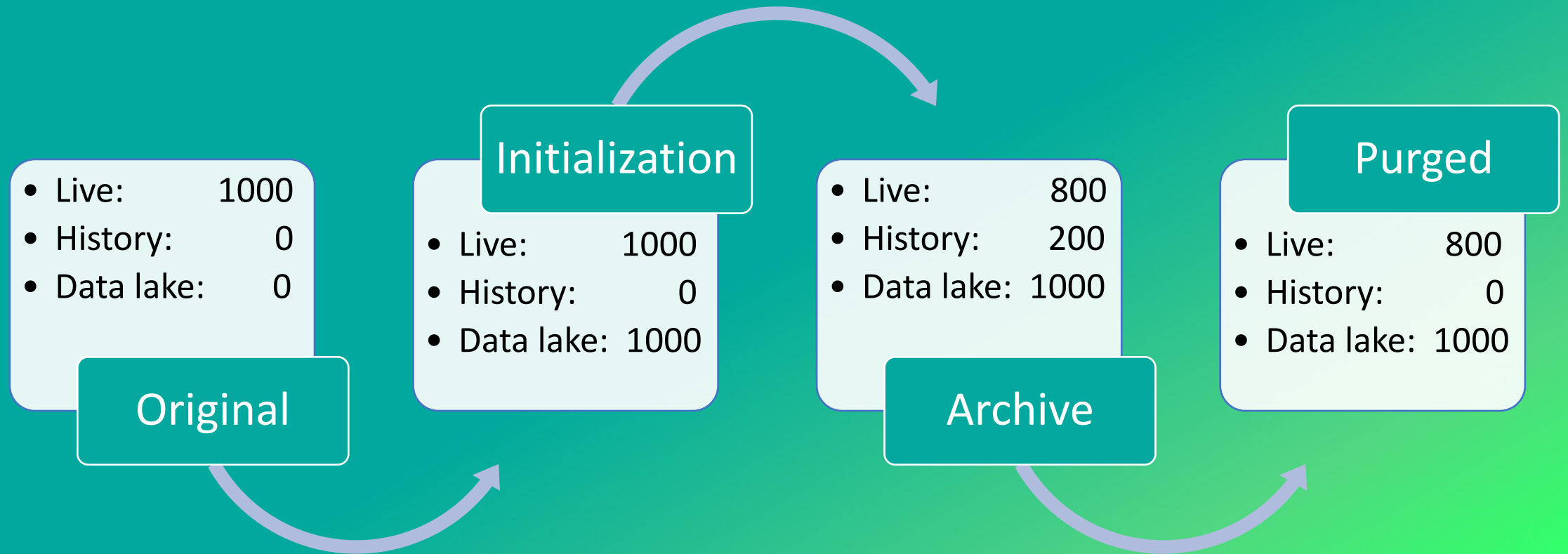
* LTR policies can
1. ONLY be defined for FnO entities enabled for retention.
2. be set from FnO app UI or Power Apps maker portal.
3. be viewed from FnO and maker portal retention policies dashboard

** Dependency on data type in source table .
DB capacity savings from 25 Athena production customers,

*** For illustration purpose only.
Customer decides time period.

Single FnO entity used for data lake movement

Archive flow



Supported archive scenarios

General available

- Ledger transactions
- Tax transactions
- Sales orders
- Inventory transactions
- Inventory journals

Preview

- Customer invoices

Status unknown

- Inventory documents (flight)
- Commerce transactions (flight)

Customizations

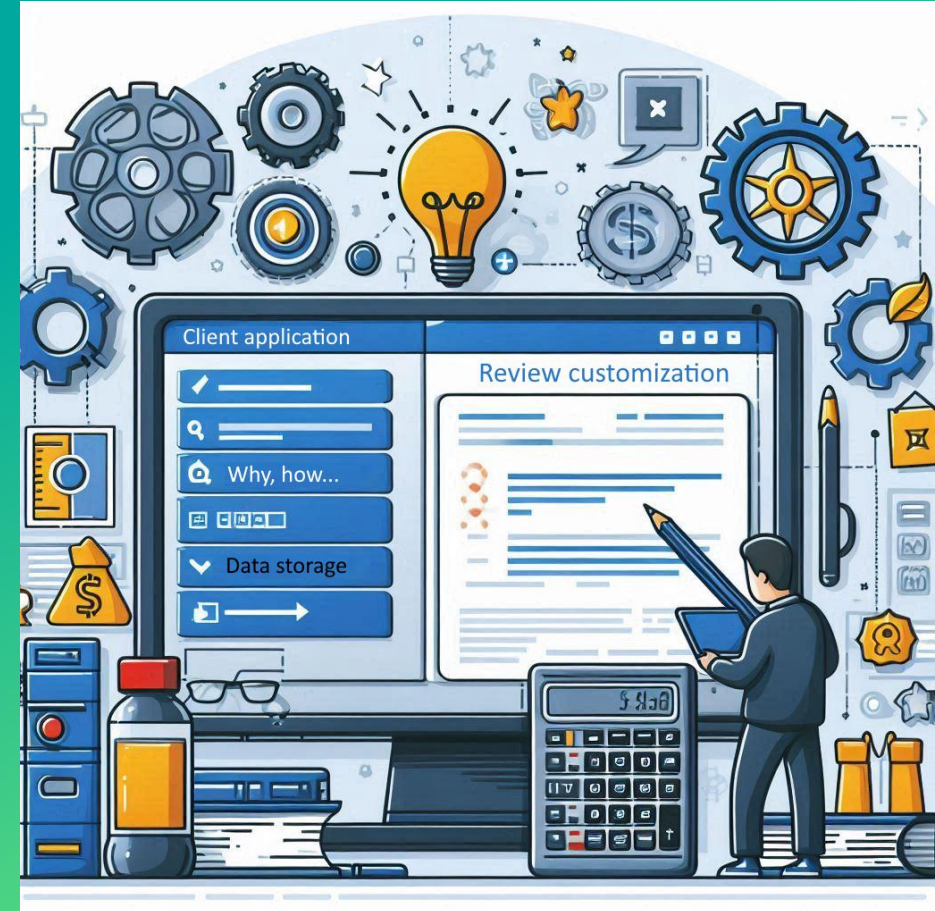
- Custom fields
- Custom tables

The screenshot shows the 'Feature management' page in the Dynamics 365 Finance and Operations Preview environment. The page title is 'Feature management' with a sub-header 'Do not enable new features automatically'. There are tabs for 'New', 'Not enabled', 'Scheduled', and 'All', with 'All' being the active tab. A search bar labeled 'Filter' is present. Below the tabs is a table with the following columns: Feature name, Status, Enable date, Feature added, Feature state, and Module. The table contains two rows of data.

Feature name	Status	Enable date	Feature added	Feature state	Module
(Preview) Archive Customer invoice with long term retention.	✓	10/29/2024	10/25/2024	Preview	Accounts receivable
Archive with Dataverse long term retention	✓	10/29/2024	4/8/2024		System administration

Review customizations

- Check for data redundancy
- BLOB fields versus file storage
- Create table in F&O or Dataverse
 - Dual write required or you can use virtual entities?
- Custom Index
 - Required or obsolete?
 - Included columns
- Cleanup or archival required?



Other data and settings

- Review settings
 - Alert rules
 - Database log
 - Document history
 - Number sequences not in use
 - “Skip staging” during DMF export
- ERP migration – historical data
- Transaction less copy
 - PPAC only
- Pay as you go
 - Azure subscription
 - Set up billing rule
 - Select environment(s)
- Extend Dataverse capacity for 30 days
 - Self-service

There is more...

- Some tables currently not supported for cleanup or archival
 - Workflow history
 - SysEncryptionLog
 - SecurityObjectHistory
 - ERLCSFileAssetTable
 - SysOutgoingEmailTable/SysOutgoingEmailData
- Financial reporter some suspicious large tables
 - Try reset data mart (MRDB) database first
- Entity store



PPAC

Archive workspace

Resources

Cleanup routines in D365FO



Archive data in D365FO



Extend Dataverse capacity for 30 days



Questions



THANK YOU!

